

nanpa 1

Feb 23, 2024

kuté muté!

lipu lili pi *suli nanpa wan*

www.kutemute.com

Virtual Market
Summer 2023

o tawa o musu!



4 toki pi sinpin lipu Virtual Market

tenpo kulupu esun Virtual Market li pana lukin e pali pi jan mute. jan Toluneko en kon Nene li pali e ijo tawa tenpo ni.

toki lili

3 toki pona en musi VRChat la, jan Toluneko li toki e wile

ijo pona suli

mi olin e ijo ale ni. sina o lukin e ona kin!

3 ma pi musi VRChat tan jan pi toki pona ona li ken musi li ken nasa.

6 ma Shaderception sina ken pali e nasin kule kepeken musi VRChat taso!

monsi mi

7 jan Toluneko li toki e lon toki pona sina li wawa? o pana e pona tawa ante toki mi!

7 toki pini

kulupu pali Kute Mute

jan Toluneko (“fuopy”) - lawa, pali toki, pali lukin, mama. sina wile toki la, o kepeken toki@kudemute.com.

copyright © 2024 fuopy

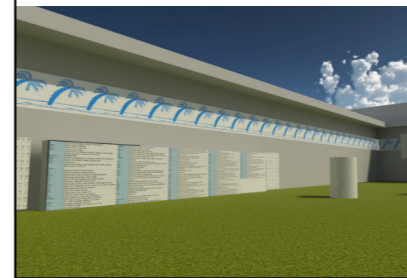
The use of this work for AI training is prohibited.



ma pi musi VRChat tan jan pi toki pona

jan pi toki pona li pali e ma. ona li ken epiku tawa sina. o lukin!

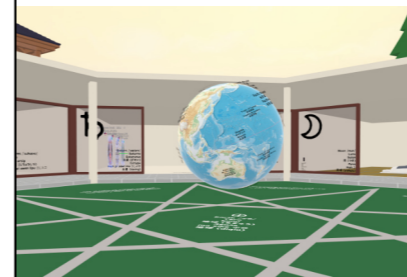
■ Toki Pona VR



ni li ma nanpa wan pi toki pona lon musi VRChat. sina ken lukin e nimi pu e sitelen pona. sitelen tawa pi kama sona li lon. mi pali e ma ni tan wile mi ni: jan mute li toki pona lon musi VRChat! kulupu Ma Toki Pona VR li kepeken ma ni lon tenpo mun mute. taso, tenpo ni la, ona li kepeken ma ante. ni li kama ma majuna, taso pilin pona mi li awen.

mama: jan Toluneko

■ Babiluro



tenpo kulupu mute li lon ma ni. kulupu PaliPape li pana e sona pi toki mute lon ma ni lon tenpo mute. sina tawa ma ni lon tenpo kulupu la, o lukin e telo suli pi nimi mute. ona li suwi li epiku! kulupu Ma Toki Pona VR en kulupu PaliPape li kama wan lon tenpo wan pi tenpo mun ale!

mama: jan Ano

■ Toki Pona Clubhouse



tenpo kulupu mute pi kulupu Ma Toki Pona VR li lon ma ni. tomo sona li lon. sitelen sona pi kule mute li lon. ijo musi mute li lon.

mama: jan Iseja

■ toki pona learning world!



lipu sona mute li lon ma ni. sina ken lukin e sitelen tawa kin.

sina wile kama sona anu pana sona e toki pona la, o tawa ma ni!

mama: jan Jami

■ ma sin tan SINA?

???

sina pali e ma la, ona li ken lon ni!

mama: SINA! ■

toki lili

mi wile e ni: jan pi toki pona li pali e ijo mute tawa musi VRChat!



tenpo open pi kulupu Ma Toki Pona Wija la, jan ala li sona e nasin pali. ona li sona ala e ilo Unity. ni la, mi pana e sona pali tawa ona lon tenpo sike pini.

tenpo ni la, jan lili li pali e ma sin. ni li pona tawa mi! o kama sona e ilo Unity!

sina pali e ma sin pi toki pona, o toki e ona tawa mi! nimi pi poki toki mi li

toki@kudemute.com.

mi wile pana lukin e pali sina tawa jan mute a!

–jan Toluneko “fuopy”, jan lawa pi lipu ni

ijo pona mute li lon esun Vket

toki pi sinpin lipu:
Virtual Market

kuté muté!



■ jan Toluneko en kon Nene li lon sinpin tomo Kute Mute. ona li lon ma The Edge of Hi-Law City - Hero Arc.

tenpo kulupu Vket li musi tawa jan mute pi musi VRChat. ona li kama lon tu lon tenpo sike ale. jan li ken tawa ona, li ken lukin e tomo lili mute, li ken esun e len sin, li ken alasa e ijo musi sin.

ona li musi tan ni: sina en jan pona sina li ken tawa sama! kulupu mani suli li pana e ijo tawa esun Vket. ona li suli li musi li wawa. o lukin e tomo lili ale! kin la, jan pali ale pi kulupu VRChat li ken pana e tomo lili tawa esun Vket. sina ken pali e

tomo kepeken ilo Unity (ni li sama musi VRChat). ni la, tomo ante ale li *lukin sama ala*.

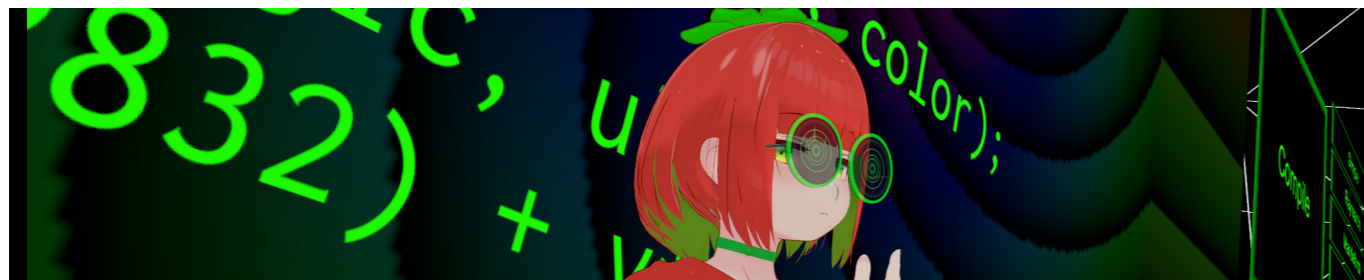
sina wile pali e tomo lili la, o tawa lipu <https://event.vket.com/>. sina o pali e sijelo sin lon lipu ni. tenpo ni la, sina wile pali e tomo tawa ilo PC la, sina o pana e mani. sina wile pali e tomo tawa ilo Quest la, sina o pana ala e mani. sina ken pali e tomo tawa ilo ale lon tenpo sama.

kulupu tu pi toki pona li pali e tomo lili. sina ken lukin e tomo tan kulupu PaliPape lon ma Vket2023S Quest Luluana Resort - Luana Beach. kin la, sina ken lukin e tomo tan kulupu Kute Mute. ona li lon ma Vket2023S The Edge of Hi-Law City - Hero Arc. toki len suwi li lon ma ni tu. o tawa ma ni tu!

tenpo pini pi esun Vket la, ma ale li weka. ma suli pi kulupu esun li weka lon tenpo ale. taso, ale li ike ala. ma pi

kulupu VRChat li kama sin lon tenpo mun lili kama! sina o awen: ale li pona lon tenpo kama.

mi wile e ni: toki pona mute li lon tenpo esun Vket. mi pali e tomo lili tu tu. sina ken pali kin anu seme? ■



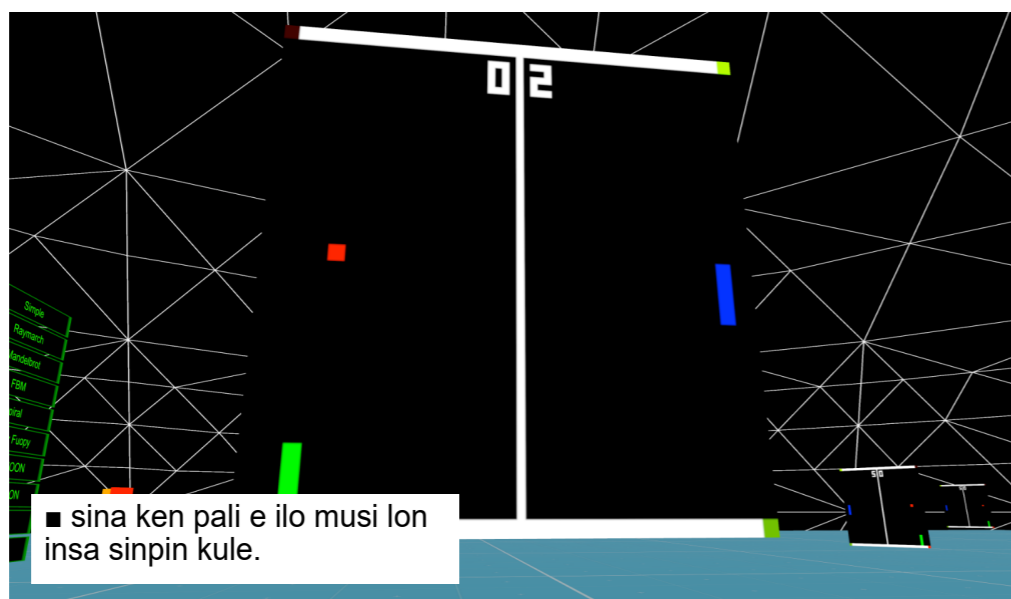
o sona e ni: jan mute li toki e ni: "mi wile pali e nasin kule, taso ona li pali mute a..." ante la, jan ante li ken toki e ni: "nasin kule li wawa. taso... mi wile sile e wawa ona a!" jan Pema99 li pana e pona tawa pilin ni tu. ni tu li wile tawa sama ma Shaderception lon musi VRChat.

toki ilo Shaderception li suwi tawa jan sin. toki ni li jo e nimi lili e nasin lili. taso, sina ken pali musi e musi kepeken ona. sina pali e lipu pi toki ilo Shaderception lon ma Shaderception.

ma Shaderception li wawa tan ni: sina ken pali e nasin kule sin lon musi VRChat taso. sona ilo ante li ken lon ala! sina wile pali e nasin kule? ale li pona, sina o lon. ni taso. sina pini!

jan Pema99 li pali e ma Shaderception kepeken toki ilo UdonSharp. toki UdonSharp li suli nanpa wan tawa jan pali pi musi VRChat. lipu nasin pi toki UdonSharp tan jan Pema99 li jo e nasin wawa: ona li ken ante e toki Shaderception tan sina tawa toki nanpa pi ilo kule! sina wile kama sona e toki Shaderception la, o kama lon ma Shaderception!

pana sona li musi tawa mi kepeken ma ni. tenpo mute la, mi pana e sona pi nasin kule tawa jan pona mi. ma ni



■ sina ken pali e ilo musi lon insa sinpin kule.

li jo e ilo la, ona li ken pana e toki kule sina tawa jan ale. jan pi pali ala li ken musi li ken lukin e toki kule sina li ken kama sona tan toki kule sina!

o lukin e toki ilo ni. toki ni li pana e loje tawa ale sitelen lukin:

```
float4(1, 0, 0, 1)
```

toki ni li pana e sike tan meso. kule sike li pimeja lon meso. kule li kama loje lon selo sitelen lukin:

```
length(xy())
```

toki ni li sama. taso, ilo tawa sina li ante e meso:

```
length(xy() - axis()) < 1
```

sina wile sona mute la, o lukin e ma Shaderception lon musi VRChat.

kin la, jan Pema99 li pana e lipu sona tawa jan ale a! ona li lon ni:

```
kute.la/1/shaderception
```

o pali musi pona! ■

jan Toluneko li toki e ni:

mi wile e ni: sina o pona e ante toki mi!

tenpo pini la, mi toki tawa jan pali ma mute pi musi VRChat. mi toki e ni: "mi wile pana e toki pona e ma sina. ni li pona ala pona?"

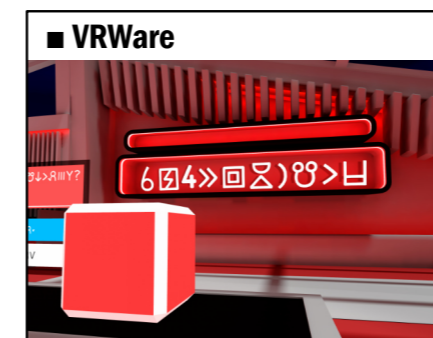
tenpo ni la, jan mama tu li ken kama jo e ante toki mi (jan mama ante li wile

kin, taso ona li ken ala lon tenpo ni). ni la, ma tu li kama toki pona.

taso, ken la... ante toki mi li nasa! mi wile e ni: sina o pana e pona tawa ante toki mi. mi pana e nasin pi pona ni lon lipu ni. sina wile pona e ona

la, o toki tawa mi kepeken poki toki@kudemute.com.

sina wile ante toki e ma ante pi toki pona ala la, sina ken toki tawa mama ona. sina sona ala e nasin pona la, sina ken toki tawa mi! mi tu li ken toki tawa mama ona.



lon ma musi VRWare la, sina en jan ante li musi e musi lili mute! musi lili ale li lon tenpo lili taso.

mi wile e ni: ken la, toki ni li pakala. sina pilin sama la, o pona e ona!

o lukin e ante toki lon lipu ni: kute.la/1/vrware



lon ma musi Wavelength la, jan toki en jan kute li lon. jan toki li jo e pilin, taso ona li ken ala toki e pilin tawa jan kute. jan toki li ken toki e nimi wan taso. jan kute o kute e nimi ni, o lon poka pilin pi jan toki.

mi wile e ni: nimi musi mute o lon. tenpo ni la, nimi musi lili li lon. sina ken pana e musi sin!

o lukin e nimi lon lipu ni: kute.la/1/wavelength ■

I toki pini

pona tawa sina ale! jan pi kulupu Ma Toki Pona VR en jan pi kulupu PaliPape o! o awen pona!

mi wile pali tu e lipu ni lon tenpo mun ale. mi ken ala ken ni? mi sona ala. taso, mi wile! sina wile pana e toki tawa lipu ni la, o toki tawa mi! ona li ken lon lipu ni kama!

pini la, o kute mute! ■

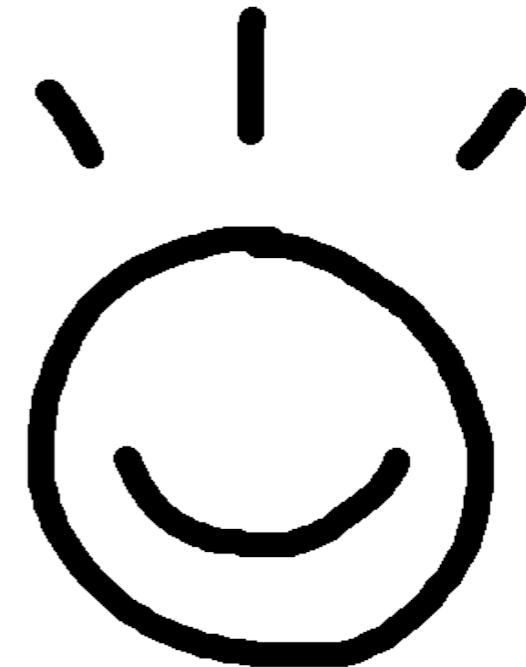


Toki Pona

A language with only
120 words

o lukin e ilo VR sama
jan pi kepeken ona.

kuté muté!



Presented By:

**kuté
muté!**

What is Toki Pona?

Toki Pona is a constructed language invented by Canadian linguist, Sonja Lang. It was created in 2001 as a personal challenge to see if it was possible to describe the human experience in 120 words. After posting it online, learners of the language began exploring its boundaries and speaking it too. The first official book describing the language came out in 2014. The dictionary in this booklet is largely based on that book.

Languages around the world form the inspiration for Toki Pona. The word “toki” comes from the word “tok” a language called Tok Pisin, spoken in Papua New Guinea. “kala” comes from the Finnish word for fish. The grammar for yes/no questions comes from Mandarin.

Speakers around the world are learning Toki Pona today! In the USA, Europe, and Japan too! Toki Pona is for me and you! Platforms like *Discord* and *VRChat* have hundreds of speakers. And you can join the conversation at the toki.social Mastodon instance!

Learning Toki Pona takes the shortest amount of time out of any other spoken language. Open the dictionary and memorize the 120 words. Read the original book for the dozen grammar rules. Then start practicing your listening and speaking!



Toki Pona fluency is less about learning new words and grammar. Instead it's about contemplating new ways of using what you already know! If you've ever been turned off by memorizing and wanted to try speaking immediately, Toki Pona might be for you!

To learn more, visit the official website at tokipona.org! If you're interested in who prepared this pamphlet, check out kutemute.com!

o awen pona!



Small Phrases

Saying “Hello!” is one of the most universal ways to get people to like you. In Toki Pona, it's as simple as saying “toki!” The word, “toki,” means “communicate.” But it also can be used to say “hello!”

<i>jan Toluneko:</i>	“toki.”	Hello.
<i>jan Luwa:</i>	“toki!”	Hello!

Saying “Thank you” is another good thing to do. In Toki Pona, the word “pona” means “good.” But it can also be used to mean “thanks.”

<i>jan Toluneko:</i>	“a, sina pona!”	Hey, you're good!
<i>jan Luwa:</i>	“pona!”	Thanks!

Saying “Goodbye” is the classic way to gracefully exit a social encounter. In Toki Pona, “mi tawa” can mean “I'm going.” This might sound abrupt at first, but an important part of the spirit of Toki Pona is communicating the core of what you mean. The consequence of this is that politeness implied by default:

<i>jan Toluneko:</i>	“mi tawa”	I'm going.
<i>jan Luwa:</i>	“o tawa pona!”	Safe travels!

“How are you?” is a common thing to be asked, and at times it can be difficult to know how to answer. Let's look at some examples of navigating this question:

<i>jan Toluneko:</i>	“sina pilin seme?”	How are you feeling?
① <i>jan Luwa:</i>	“pona.”	Good.
② <i>jan Luwa:</i>	“ike ala.”	Not bad.
③ <i>jan Luwa:</i>	“mi wile lape.”	I want to sleep.
④ <i>jan Luwa:</i>	“mi lon.”	Existing.

<i>jan Toluneko:</i>	“sina pali e seme?”	What are you doing?
① <i>jan Luwa:</i>	“pona.”	Good.
② <i>jan Luwa:</i>	“mi moku”	Eating.
③ <i>jan Luwa:</i>	“mi pali mani”	Working at my job.
④ <i>jan Luwa:</i>	“mi pali ala”	Nothing.

Grammar



Describing something in Toki Pona is as simple as adding words to the end of it. Whether you're talking about a noun or a verb, you can simply tack on more words to be more specific:

<i>pan sul</i>	Big bread
<i>lipu mute</i>	Many pages
<i>nasin sewi</i>	Upwards path
<i>nasin anpa</i>	Stairs that go down

Toki pona sentences begin with a subject. After that, the "li" particle means that the next thing coming up is the verb. After that, the "e" particle means that the next thing coming up is the object. In summary, the basic format for a sentence in Toki Pona is:

Subject **li** Verb **e** Object

"ona li moku e pan" They eat bread.
"ni li pona!" This is good!

Particles are the building blocks for sentences in Toki Pona. They are small words that have no meaning on their own. They serve to give context to the other words in the sentence. Here are some of the basic particles:

<i>en</i>	Introduces a new subject	<i>"moku en telo li sul"</i>	Food and water are important.
<i>li</i>	Marks an upcoming verb	<i>"soweli li utala"</i>	Animals fight.
<i>e</i>	Marks an upcoming object	<i>"soweli li utala e soweli ante"</i>	Animals fight other animals.
<i>la</i>	Joins sentences, suggests cause-effect relationship	<i>"mi moku e telo la, mi pilin pona mute!"</i>	I drank water, so I'm feeling good!
<i>pi</i>	Creates groupings in a noun phrase	<i>tomo sul pi kama sona</i>	A big building for becoming knowledgeable
<i>o</i>	Indicates command or wish	<i>"o lape pona"</i>	Sleep well!
<i>o</i>	Addresses someone	<i>"jan Toluneko o!"</i>	Yo, Torneko!

Important Stuff



There are many possible interpretations to things that are written or spoken in Toki Pona. The language is able to have few words because of the flexibility in meaning. But this also means context becomes much more important! For example, consider ordering a drink:

In a Coffee Shop (you are human)	<i>"mi wile jo e telo wawa pi suwi ala."</i>	I want a strong coffee with no sugar.
In a Robo Shop (you are robot)	<i>"mi wile jo e telo wawa pi suwi ala."</i>	I want some strong oil with no sugar.

The language is evolving as time passes. One thing that makes Toki Pona fun to speak comes from the fact that anything one might talk about is derived from the original base language. Listening to others speak about a new topic is a treat because you'll quickly understand what they're saying, despite you never previously contemplating a way of speaking about the topic in Toki Pona.

Also there are a few little grammar quicks that you'll have to look up later. This early version of the booklet doesn't cover everything. For now though, just remember that if a sentence starts with a subject that is "mi" or "sina" and nothing else, you omit the "li" particle.

For further information, get the official book:

Toki Pona: The Language of Good
by Sonja Lang

Another great resource is this website:

lipu sona pona (Toki Pona Course)
<https://lipu-sona.pona.la>

And remember...

"o kute mute!"

! a or kin	PARTICLE (emphasis, emotion or confirmation)
☞ akesi	NOUN non-cute animal; reptile, amphibian
X ala	ADJECTIVE no, not, zero
☞ alasa	VERB to hunt, forage
∞ ale or ali	ADJECTIVE all; abundant, countless, bountiful, every, plentiful NOUN abundance, everything, life, universe NUMBER 100
⌋ anpa	ADJECTIVE bowing down, downward, humble, lowly, dependent
× ante	ADJECTIVE different, altered, changed, other
Y anu	PARTICLE or
∧ awen	ADJECTIVE enduring, kept, protected, safe, waiting, staying PRE-VERB continuer à
» e	PARTICLE (before the direct object)
+ en	PARTICLE (between multiple subjects)
⌘ esun	NOUN market, shop, fair, bazaar, business transaction
○ ijo	NOUN thing, phenomenon, object, matter
∩ ike	ADJECTIVE bad, negative; non-essential, irrelevant
⌘ ilo	NOUN tool, implement, machine, device
⌋ insa	NOUN centre, content, inside, between; internal organ, stomach
☞ jaki	ADJECTIVE disgusting, obscene, sickly, toxic, unclean, unsanitary
⊙ jan	NOUN human being, person, somebody
⌘ jelo	ADJECTIVE yellow, yellowish
⊗ jo	VERB to have, carry, contain, hold
∞ kala	NOUN fish, marine animal, sea creature
☹ kalama	VERB to produce a sound; recite, utter aloud
∧ kama	ADJECTIVE arriving, coming, future, summoned PRE-VERB to become, manage to, succeed in
♀ kasi	NOUN plant, vegetation; herb, leaf
K ken	PRE-VERB to be able to, be allowed to, can, may ADJECTIVE possible
☞ kepeken	PREPOSITION to use, with, by means of
○ kili	NOUN fruit, vegetable, mushroom
◇ kiwen	NOUN hard object, metal, rock, stone
☞ ko	NOUN clay, clinging form, dough, semi-solid, paste, powder
∞ kon	NOUN air, breath; essence, spirit; hidden reality, unseen agent
△ kule	ADJECTIVE colourful, pigmented, painted
☞ kulupu	NOUN community, company, group, nation, society, tribe
☞ kute	NOUN ear VERB to hear, listen; pay attention to, obey
) la	PARTICLE (between the context phrase and the main sentence)
↪ lape	ADJECTIVE sleeping, resting
⌘ laso	ADJECTIVE blue, green
⊖ lawa	NOUN head, mind VERB to control, direct, guide, lead, own, plan, regulate, rule
⌘ len	NOUN cloth, clothing, fabric, textile; cover, layer of privacy
✱ lete	ADJECTIVE cold, cool; uncooked, raw

> li	PARTICLE (between any subject except mi alone or sina alone and its verb; also to introduce a new verb for the same subject)
∨ lili	ADJECTIVE little, small, short; few; a bit; young
∞ linja	NOUN long and flexible thing; cord, hair, rope, thread, yarn
□ lipu	NOUN flat object; book, document, card, paper, record, website
⌘ loje	ADJECTIVE red, reddish
∩ lon	PREPOSITION located at, present at, real, true, existing
√ luka	NOUN arm, hand, tactile organ NUMBER five
☞ lukin or oko	NOUN eye PRE-VERB to seek, look for, try to VERB to look at, see, examine, observe, read, watch
U lupa	NOUN door, hole, orifice, window
⊕ ma	NOUN earth, land; outdoors, world; country, territory; soil
♀ mama	NOUN parent, ancestor; creator, originator; caretaker, sustainer
♂ mani	NOUN money, cash, savings, wealth; large domesticated animal
⊙ meli	NOUN woman, female, feminine person; wife
ρ mi	NOUN I, me, we, us
♂ mije	NOUN man, male, masculine person; husband
☞ moku	VERB to eat, drink, consume, swallow, ingest
⊕ moli	ADJECTIVE dead, dying
⌋ monsi	NOUN back, behind, rear
☞ mu	PARTICLE (animal noise or communication)
☾ mun	NOUN moon, night sky object, star
☞ musi	ADJECTIVE artistic, entertaining, frivolous, playful, recreational
III mute	ADJECTIVE many, a lot, more, much, several, very NOUN quantity
# nanpa	PARTICLE -th (ordinal number) NOUN numbers
⊙ nasa	ADJECTIVE unusual, strange; foolish, crazy; drunk, intoxicated
↑ nasin	NOUN way, custom, doctrine, method, path, road
∩ nena	NOUN bump, button, hill, mountain, nose, protuberance
↓ ni	ADJECTIVE that, this
○ nimi	NOUN name, word
⌋ noka	NOUN foot, leg, organ of locomotion; bottom, lower part
! o	PARTICLE hey! O! (vocative or imperative)
☞ olin	VERB to love, have compassion for, respect, show affection to
☞ ona	NOUN he, she, it, they
⌋ open	VERB to begin, start; open; turn on
☞ pakala	ADJECTIVE botched, broken, damaged, harmed, messed up
☞ pali	VERB to do, take action on, work on; build, make, prepare
0 palisa	NOUN long hard thing; branch, rod, stick
≡ pan	NOUN cereal, grain; barley, corn, oat, rice, wheat; bread, pasta
☞ pana	VERB to give, send, emit, provide, put, release
L pi	PARTICLE of
♡ pilin	NOUN heart (physical or emotional) ADJECTIVE feeling (an emotion, a direct experience)

⚠	pimeja	ADJECTIVE black, dark, unlit
I	pini	ADJECTIVE ago, completed, ended, finished, past
𐄂	pipi	NOUN bug, insect, ant, spider
└	poka	NOUN hip, side; next to, nearby, vicinity
┌	poki	NOUN container, bag, bowl, box, cup, cupboard, drawer, vessel
☺	pona	ADJECTIVE good, positive, useful; friendly, peaceful; simple
📖	pu	ADJECTIVE interacting with the official Toki Pona book
=	sama	ADJECTIVE same, similar; each other; sibling, peer, fellow PREPOSITION as, like
🔥	seli	ADJECTIVE fire; cooking element, chemical reaction, heat source
☞	selo	NOUN outer form, outer layer; bark, peel, shell, skin; boundary
?	seme	PARTICLE what, Which
⤴	sewi	NOUN area above, highest part, something elevated ADJECTIVE awe-inspiring, divine, sacred, supernatural
▭	sijelo	NOUN body (of person or animal), physical state, torso
◎	sike	NOUN round or circular thing; ball, circle, cycle, sphere, wheel ADJECTIVE of one year
⋮	sin	ADJECTIVE new, fresh; additional, another, extra
6	sina	NOUN you
└┐	sinpin	NOUN face, foremost, front, wall
🖼	sitelen	NOUN image, picture, representation, symbol, mark, writing
📖	sona	VERB to know, be skilled in, be wise about, have information on PRE-VERB to know how to
🐾	soweli	NOUN animal, beast, land mammal
√	suli	ADJECTIVE big, heavy, large, long, tall; important; adult
☼	suno	NOUN sun; light, brightness, glow, radiance, shine; light source
▭	supa	NOUN horizontal surface, thing to put or rest something on
^	suwi	ADJECTIVE sweet, fragrant; cute, innocent, adorable
↪	tan	PREPOSITION by, from, because of
┆	taso	PARTICLE but, however ADJECTIVE only
↗	tawa	PREPOSITION going to, toward; for; from the perspective of ADJECTIVE moving
≈	telo	NOUN water, liquid, fluid, wet substance; beverage
⌚	tenpo	NOUN time, duration, moment, occasion, period, situation
🗣	toki	VERB to communicate, say, speak, say, talk, use language, think
🏠	tomo	NOUN indoor space; building, home, house, room
	tu	NUMBER two
👯	unpa	VERB to have sexual or marital relations with
☞	uta	NOUN mouth, lips, oral cavity, jaw
✖	utala	VERB to battle, challenge, compete against, struggle against
△	walo	ADJECTIVE white, whitish; light-coloured, pale
1	wan	ADJECTIVE unique, united NUMBER one
🐦	waso	NOUN bird, flying creature, winged animal
💪	wawa	ADJECTIVE strong, powerful; confident, sure; energetic, intense
✖	weka	ADJECTIVE absent, away, ignored
🙏	wile	PRE-VERB must, need, require, should, want, wish